



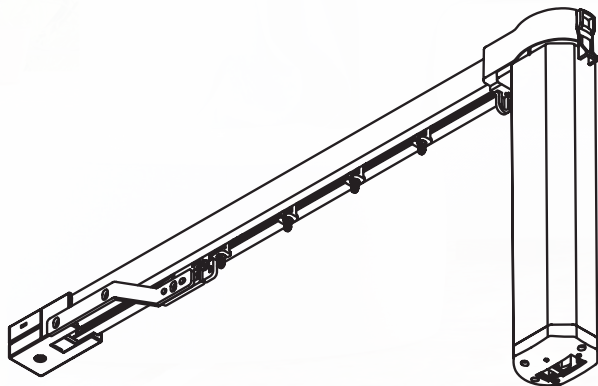
# Electric Curtain Track System

**5100**



Electric Curtain Track System 5100

## Specification

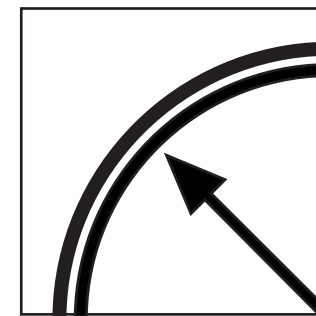


- Electric Curtain Track System Silent Gliss 5100, suitable for contract as well as residential use.
- This system is powered by a precise and silent 100 - 240 V AC Motor (24 V DC optional), which is applicable in most countries.
- Motors come with integrated radio receiver.
- Smooth operation with soft start and soft stop.
- Constant speed operation.
- "Touch and Go" offers easy operation.
- The system is equipped with a unique manual override feature against power failure which makes it more user friendly.
- Automatic obstacle detection to protect fabric jam.
- The system can stop at any position.

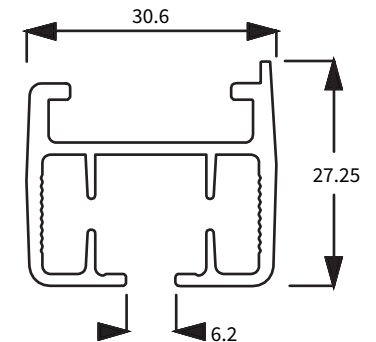


## Specification

### Profile, Bending and Specification Information



Min. radius 30cm

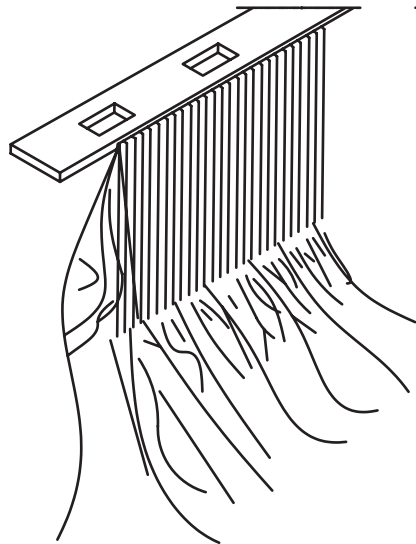


### Specification guide

Silent Gliss 5100 curtain track, electrically operated, white powder coated aluminium, complete with motor, internal drive belt, roller gliders or wave glider-cord.

## Suitable Headers

### Pencil Pleat



Pencil pleat curtains are a classic. Folds of fabric are tightly gathered to create a semi-cylindrical heading that resembles a line of pencils.

Pencil pleat curtains have a very traditional feel, so tend to fit in perfectly with more classic interior styles and in cottages or older properties. Pencil pleat curtains are very popular in living rooms, dining rooms and bedrooms.

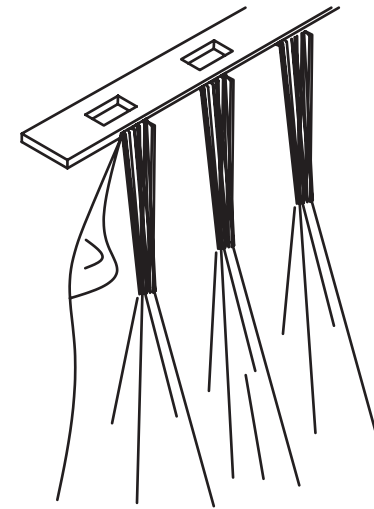
#### Fullness

Minimum  
**200%**

Standard  
**250%**

Maximum  
**300%**

### Pinch Pleat



Pinch pleat draperies has been the most popular header style for decades due to their high insulation value as a result of the additional fabric within the treatment.

A pinch pleat drapery has an elegant look yet the formal style for a variety of fullness and can be used with most track systems. The drapery fullness is “pleated” into the drapery by creating a three layered fold that is stitched together approx. 10 mm below the “fingers”.

#### Fullness

Minimum  
**250%**

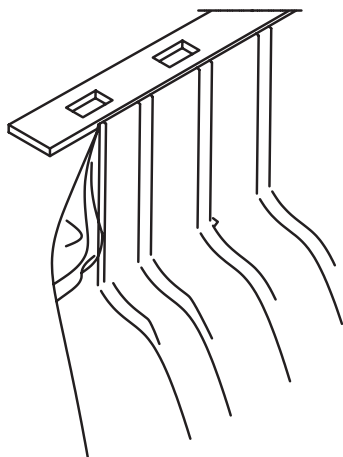
Standard  
**300%**

Maximum  
**350%**



## Suitable Headers

### Inverted Box Pleat



Inverted pleat curtains have a single pleat at the back, sometimes called a box pleat, placed at even intervals along the top. The overall look is beautiful and quite formal.

The header style brings a unique sense of style to the window. The width of the pleat is custom made and often uses more fabric than other header styles. For a more professional finish these headings can be made by hand. As the finished width is critical, but not easily adjusted we recommend that the width of the pleats and spaces are worked out before the curtains are made.

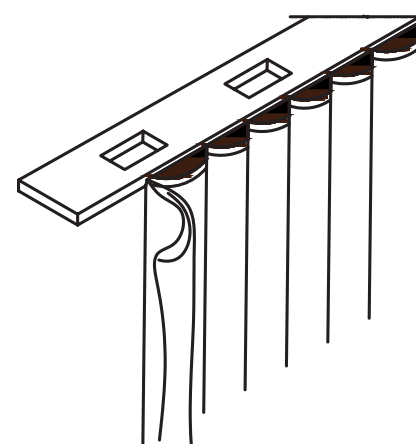
#### Fullness

Minimum  
**300%**

Standard  
**350%**

Maximum  
**400%**

### Wave



Wave headings need a special track and are ideal for a contemporary home. It is a stylish header which gives a so rippling effect. The header is widely used in hospitality and healthcare applications, where a residential look is wanted.

Panels snap to carriers and folds are identically spaced without flat drapery areas. This also creates a unified look from both inside and outside the room.

#### Fullness

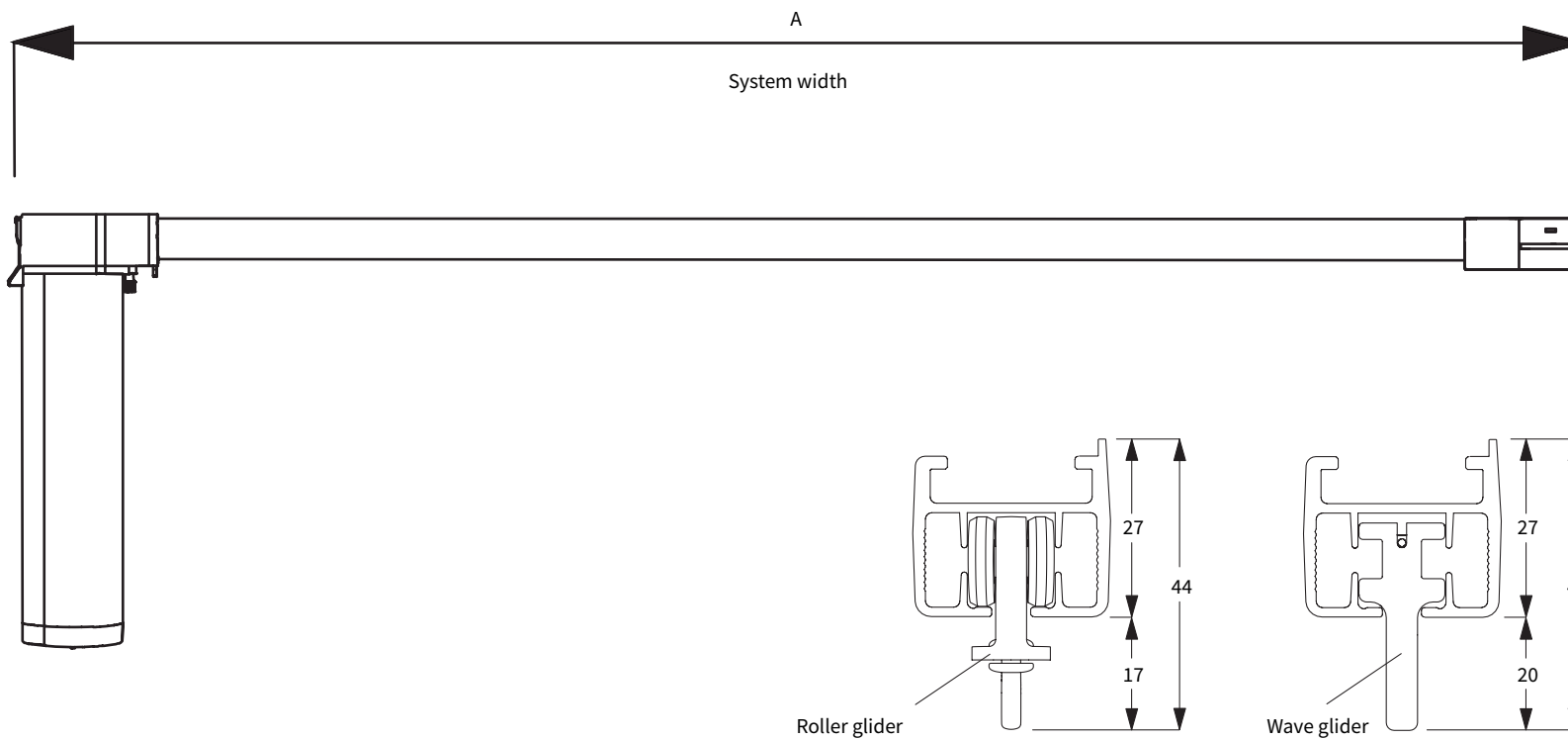
Minimum  
**180%**

Standard  
**220%**

Maximum  
**250%**



# How to Measure





# System Dimensions

## Max. Curtain Weight Charts



9 m



25 kg

### Application with Rollers

	3 m	6 m	9 m
	20	25	23
	20	25	23
	20	17	13
	20	17	13
	15	13	8
	15	13	8
	12	10	-
	12	10	-

kg max

### Application with Wave Gliders

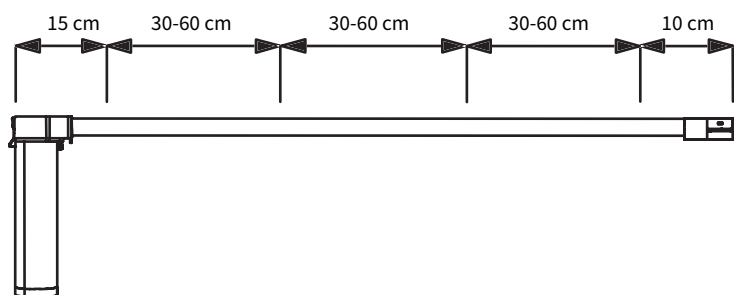
	3 m	6 m	9 m
	20	20	18
	20	20	18
	18	14	10
	18	14	10
	12	10	8
	12	10	8
	8	-	-
	8	-	-

kg max

It is essential with electrically operated curtain tracks to choose a system which can readily cope with the specific demands placed on it. The most crucial factor is the total weight of the curtains transported by it, but then come further questions such as how the curtains are stacked, are there bends involved, ceiling or wall fix, the type of curtain heading etc.

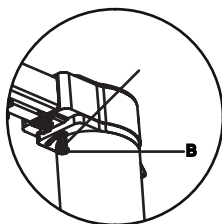
## Fitting Information

### Bracket and profile positioning



For all electrically operated curtain track systems, a connection point should be made available at a distance of no greater than 1 metre from the motor. This should be discreetly situated behind the curtain, taking care that the motor will not obstruct access to the socket.

### Attention



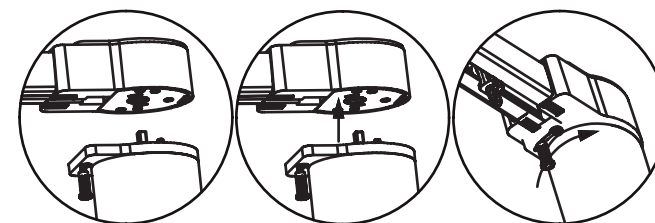
A: Lock levers

B: Hook

1: Install in accordance with the requirements of size

2: Ensure that the position of motor is according to the left picture

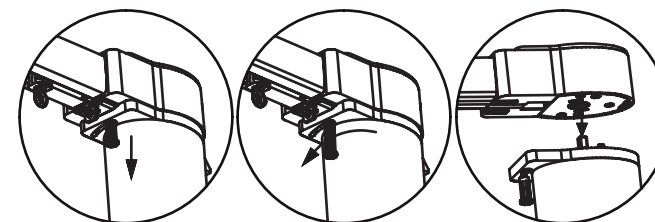
3: The ceiling must be strong



Install motor

Steps:

- 1: The motor is insert into the main gear box
- 2: Press the locking key, the rotation of the motor to drive the position, loose the lock
- 3: Motor is installed successfully



Remove motor

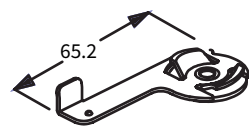
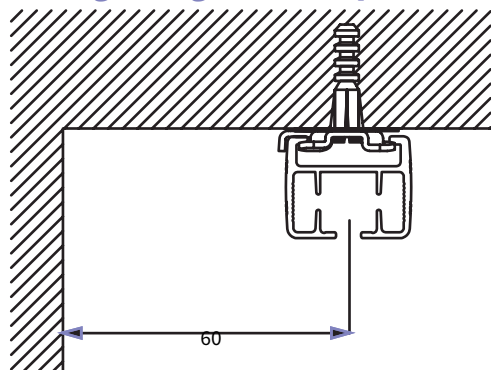
Steps:

- 1: Press the locking key, rotate the motor from the gear box off, loose the lock key
- 2: Successfully removed motor



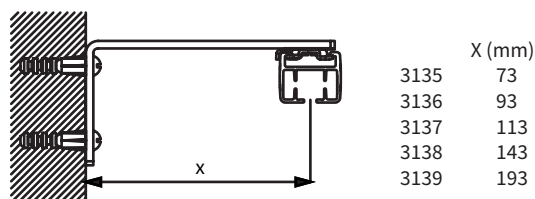
# Fitting Options

## Ceiling fitting with clamp



Clamp

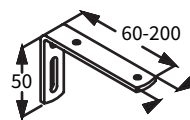
## Wall fitting with brackets and Clamp



	X (mm)
3135	73
3136	93
3137	113
3138	143
3139	193



Clamp



Brackets

Bracket cover  
(60 mm)

Brackets feature thread for screw M4x8 for fixing the clamp 10926.

Bracket cannot be used with this System.

When specifying 80 mm Wave order bracket or above.

Brackets use extended bracket cover

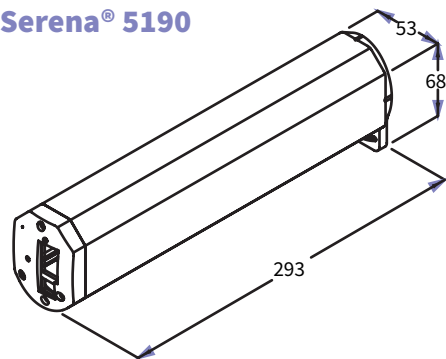
Brackets feature thread for screw M4x8 for fixing the clamp 10926 and are supplied with screw M4 x 10 CSK socket head screw.

Note: Wave 80 mm requires bracket minimum.



# Motor and Controls

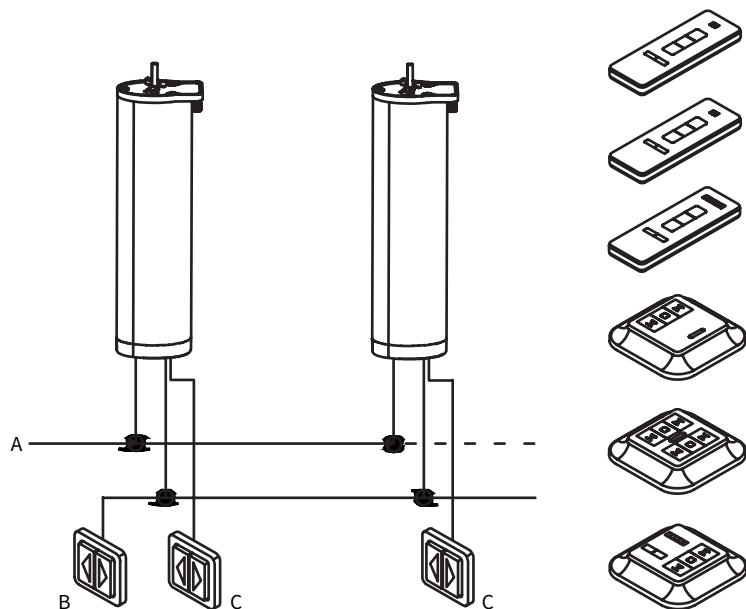
## Serena® 5190



- Torque: 1.0 Nm
- Speed: 130 rpm
- Speed: 15 cm/S
- Voltage: 100 - 240 V AC 50/60 Hz
- Power: 72 W
- Safety class: IP20
- Noise level: < 45 dBA (30 cm)
- Thermal overload protection
- Temperature for operation: 0°C to + 60°C
- Frequency receiver of Motor: 433.92 MHz

The motor 5190 is supplied with a 5m power cable with a 3 pin plug.

## Combination of transmitter and multiple systems



A: 100 - 240 V AC

One of the following transmitter can be used:

- Radio hand-held transmitter 1 channel
- Radio hand-held transmitter 2+1 channel
- Radio hand-held transmitter 6+1 channel
- Wall transmitter 1 channel
- Wall transmitter 2 channel
- Wall transmitter 5+1 channel

Combination transmitter and control over low voltage inputs is possible.  
Inside a sphere of 25 m an indefinite numbers of motors can be controlled over 1 channel.





Scan code to view on  
Smartphone or Tablet device

**UNITED KINGDOM**  
Euro Systems UK Ltd. 3 Church St,  
Kidderminster, Worcestershire,  
DY10 2AD  
UK

[info@eurosystems.co.uk](mailto:info@eurosystems.co.uk)  
[www.eurosystems.co.uk](http://www.eurosystems.co.uk)

Tel: +44 190 260 7111

 **Euro Systems<sup>®</sup>**  
*Design with Passion*

