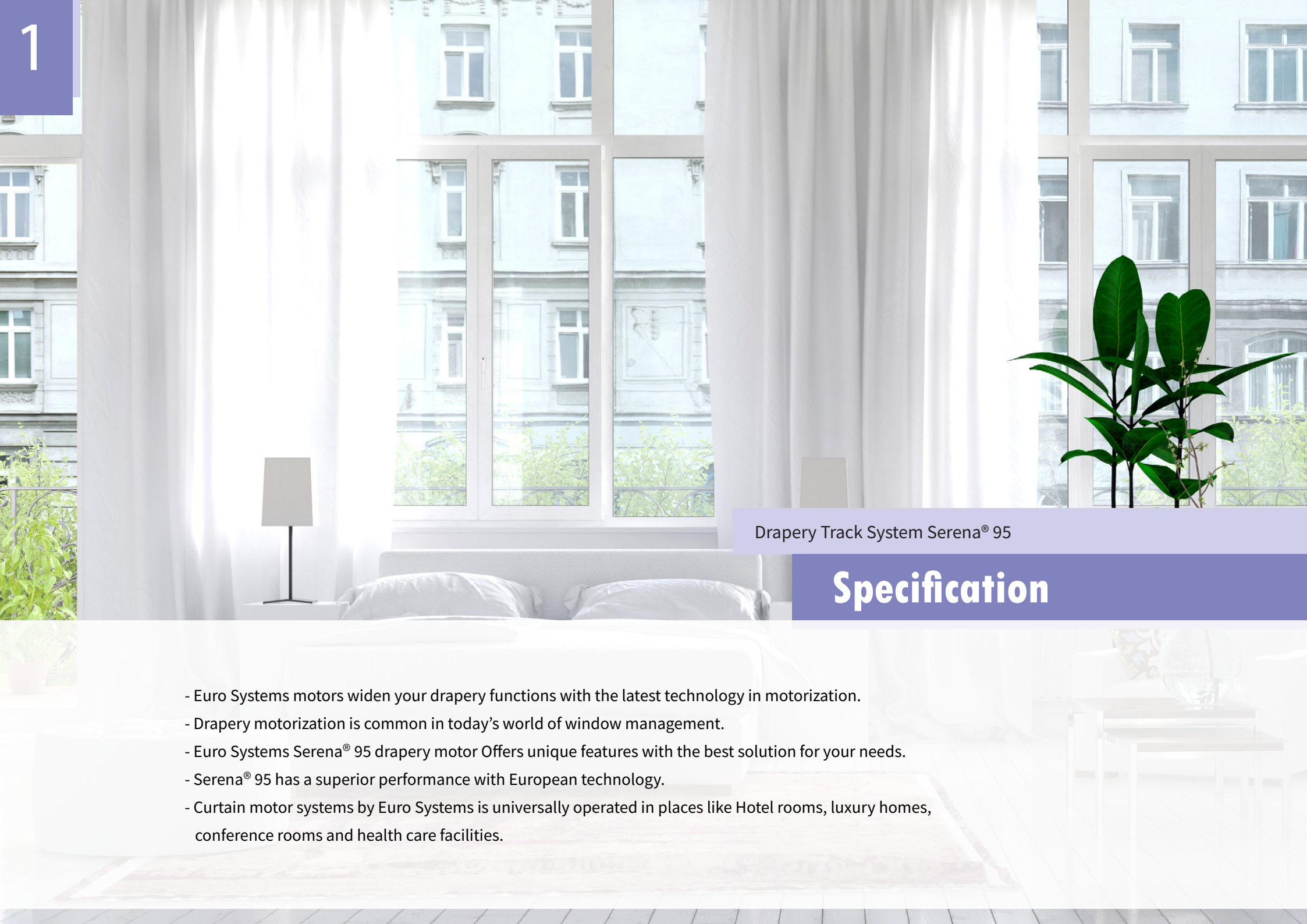




# Drapery Track Systems

**Serena® 95**



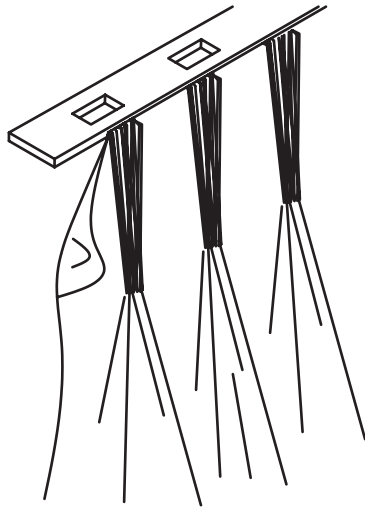
Drapery Track System Serena® 95

## Specification

- Euro Systems motors widen your drapery functions with the latest technology in motorization.
- Drapery motorization is common in today's world of window management.
- Euro Systems Serena® 95 drapery motor Offers unique features with the best solution for your needs.
- Serena® 95 has a superior performance with European technology.
- Curtain motor systems by Euro Systems is universally operated in places like Hotel rooms, luxury homes, conference rooms and health care facilities.

## Suitable Headers

### Pinch Pleat



Pinch pleat draperies has been the most popular header style for decades due to their high insulation value as a result of the additional fabric within the treatment.

A pinch pleat drapery has an elegant look yet the formal style for a variety of fullness and can be used with most track systems. The drapery fullness is “pleated” into the drapery by creating a three layered fold that is stitched together approx. 10 mm below the “fingers”.

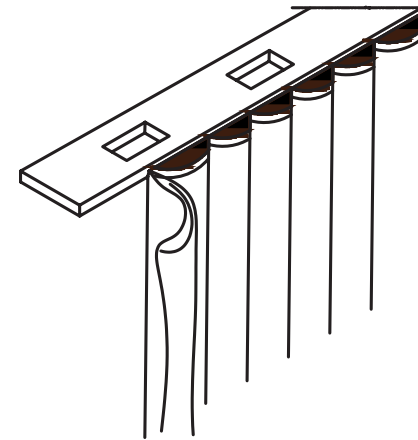
#### Fullness

Minimum  
**250%**

Standard  
**300%**

Maximum  
**350%**

### Wave



Wave headings need a special track and are ideal for a contemporary home. It is a stylish header which gives a so rippling effect. The header is widely used in hospitality and healthcare applications, where a residential look is wanted.

Panels snap to carriers and folds are identically spaced without flat drapery areas. This also creates a unified look from both inside and outside the room.

#### Fullness

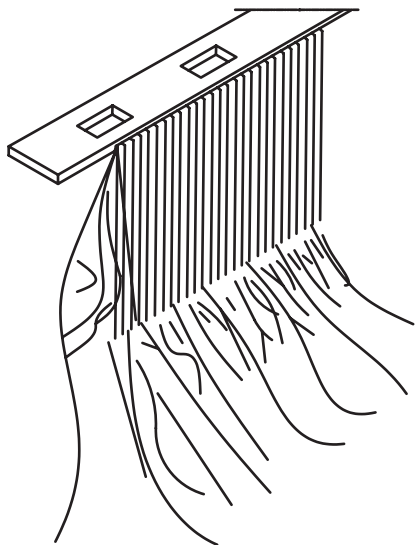
Minimum  
**180%**

Standard  
**220%**

Maximum  
**250%**

## Suitable Headers

### Pencil Pleat



Pencil pleat curtains are a classic. Folds of fabric are tightly gathered to create a semi-cylindrical heading that resembles a line of pencils.

Pencil pleat curtains have a very traditional feel, so tend to fit in perfectly with more classic interior styles and in cottages or older properties. Pencil pleat curtains are very popular in living rooms, dining rooms and bedrooms.

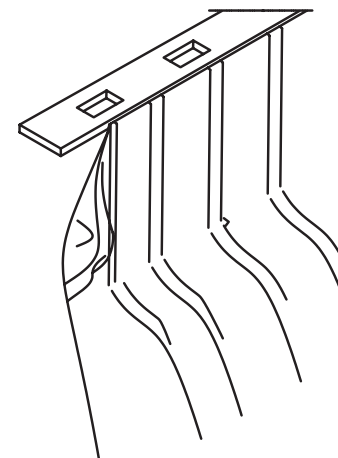
**Fullness**

Minimum  
**200%**

Standard  
**250%**

Maximum  
**300%**

### Inverted Box Pleat



Inverted pleat curtains have a single pleat at the back, sometimes called a box pleat, placed at even intervals along the top. The overall look is beautiful and quite formal.

The header style brings a unique sense of style to the window. The width of the pleat is custom made and often uses more fabric than other header styles. For a more professional finish these headings can be made by hand. As the finished width is critical, but not easily adjusted we recommend that the width of the pleats and spaces are worked out before the curtains are made.

**Fullness**

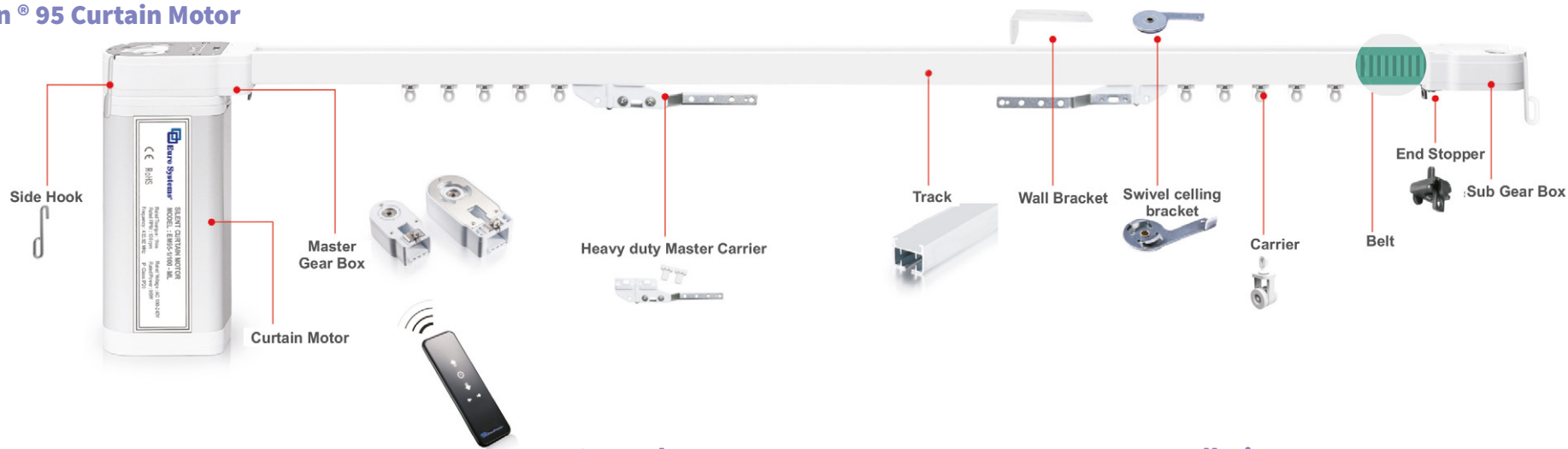
Minimum  
**300%**

Standard  
**350%**

Maximum  
**400%**

# Serena® 95

## Seren® 95 Curtain Motor



### Features

- Silent motor less than 30db
- Auto limit set of end positions
- Memory of the set limits even in case of power failure
- Soft touch start function
- Smooth docking at start and end positions.
- Manual override function in case of power failure
- Motor with the variable speed
- Draperies can be operated by touch motion feature by simply pulling on the fabrics

### Controls

- Control via wired switch
- Control via wireless switch
- Option of individual and group control
- Can be connected to Home automation and BMS

International Certifications.

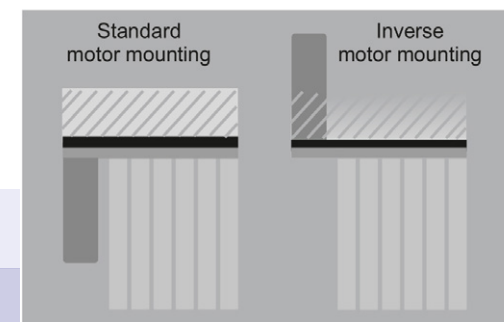


6 Years Warranty.



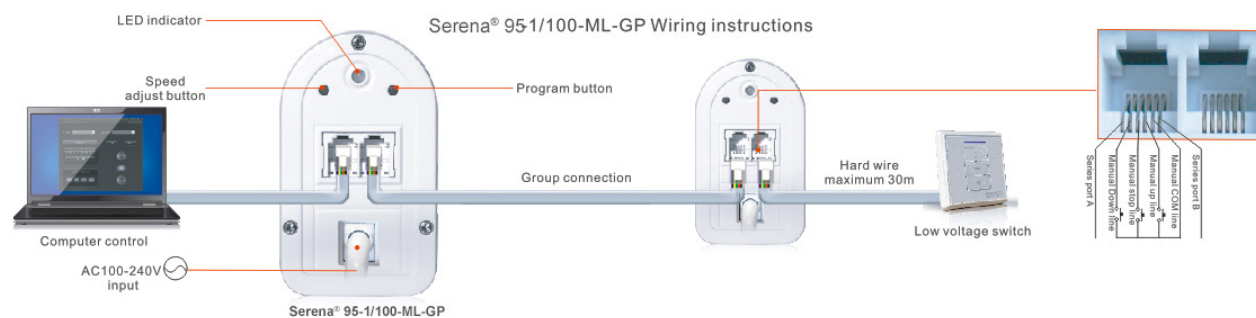
### Installation

- Stainless Steel Hardware i.e overlap, brackets etc
- Option to install the motor either or left or right side of the track
- Quick and easy installation of the track and motor
- Mounting of motor can be done either above or below the track



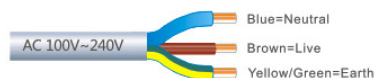
## Serena® 95

## Automation options with KNX



## Control options

## Control mode 1:



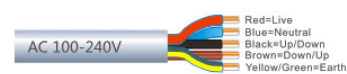
○ Low Voltage control ○ RS485 control ○ Radio control

## Control mode 2:



High voltage control

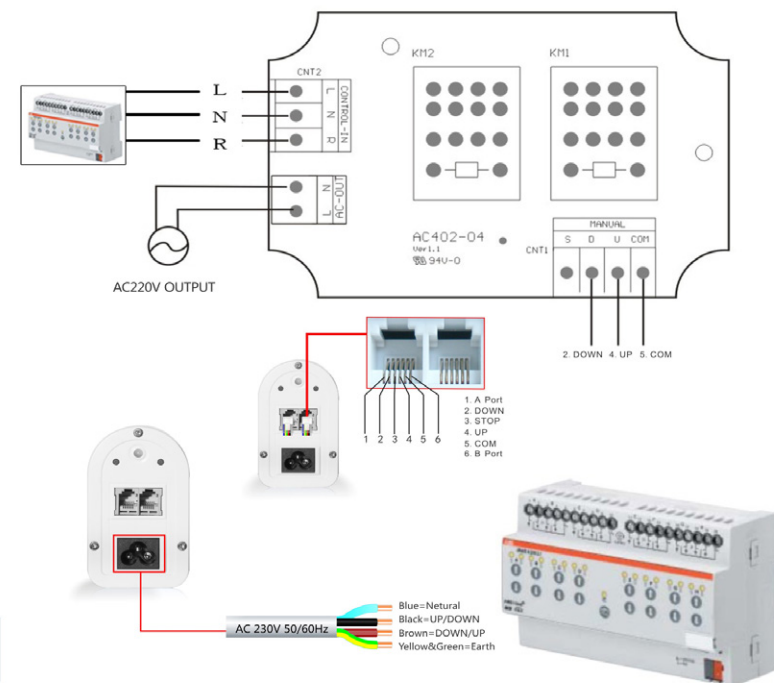
## Control mode 3:



○ Low Voltage control ○ High voltage control  
○ RS485 control ○ Radio control

RS485/RS232 & 3rd Party integrations are subject to compatibility with the 3rd party control systems. Contact [www.eurosystems.uk](http://www.eurosystems.uk) to understand the compatibility requirements prior to installation.

**Notice:** External manual switch transmits passive dry contact signal. Two wiring outlets work the same, no main and auxiliary interface


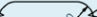




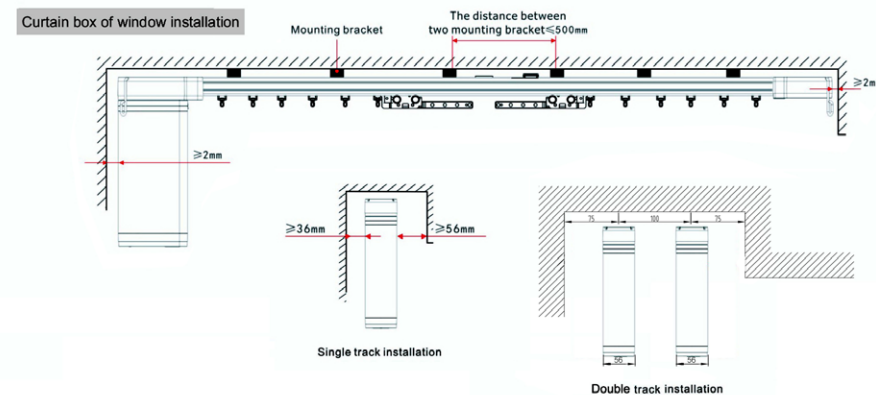
Rated Voltage	DC24V (100-ML -P) / AC100-240V 50/60Hz (100-ML -P)	
Rated	1 Nm	2 Nm
Motor Size	215.5 X 94 X 56mm (L) (W) (H)	
Running Speed	16 cm/s	
Rated Power	96 W	
IP Class	IP20	

# Drapery Track System

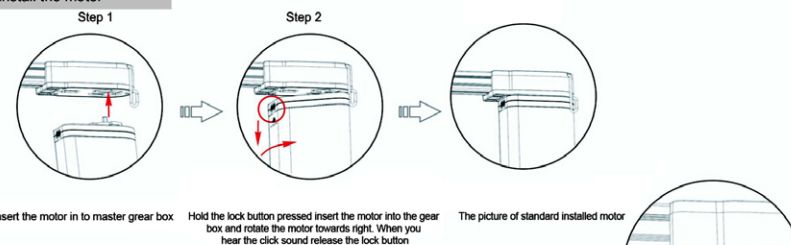
## Serena<sup>®</sup> 95

### System Specification

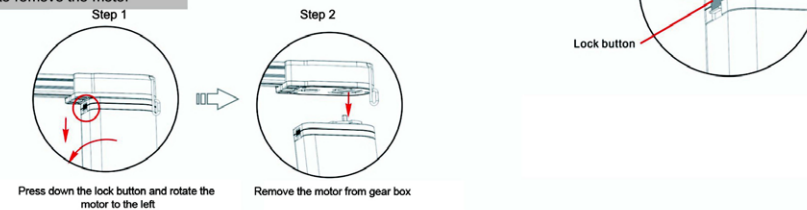
Single Motor Loading Diagram	1 Nm			2 Nm			Double Motor Loading Diagram	1 Nm	2 Nm
<div>Fabric weight</div> <div>Track length</div> <div>Master Carrier</div>	4m	8m	12m	4m	8m	12m	<div>Fabric weight</div> <div>Track length</div> <div>Master Carrier</div>	12m	12m
 Single motor with double Master Carrier	60kg	55kg	50kg	90kg	82.5kg	75kg	 Double motor with double Master Carrier	90kg	135kg
 Single motor with single Master Carrier	50kg	45kg	40kg	75kg	67.5kg	60kg	 Double motor with single Master Carrier	70kg	
 Single motor with double Master Carrier	45kg	40kg	35kg	67.5kg	60kg	52.5kg	 Double motor with double Master Carrier	60kg	90kg
 Single motor with single Master Carrier	40kg	35kg	30kg	60kg	52.5kg	45kg	 Double motor with single Master Carrier	50kg	
 Single motor with double Master Carrier	35kg	30kg	25kg	52.5kg	45kg	37.5kg	 Double motor with double Master Carrier	40kg	60kg
 Single motor with single Master Carrier	30kg	25kg	20kg	45kg	37.5kg	30kg	 Double motor with single Master Carrier	30kg	
 Single motor with double Master Carrier	31kg	21kg		46.5kg	31.5kg		 Double motor with double Master Carrier	30kg	34.5kg
 Single motor with single Master Carrier	21kg	16kg		31.5kg	24kg		 Double motor with single Master Carrier	23kg	



### How to install the motor



### How to remove the motor





Scan code to view on  
Smartphone or Tablet device

UNITED KINGDOM  
Euro Systems UK Ltd.  
Unit 11 Chancel Industrial park  
Newhall Street, Willenhall  
WV13 1NX  
UK

info@eurosystems.co.uk  
www.eurosystems.co.uk

Tel: +44 (0) 845 075 1050

 **Euro Systems®**  
*Design with Passion*

